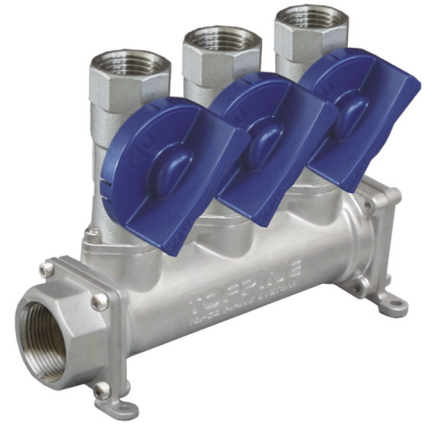


Manifold system with valve (Ball and needle types)

TPS25/32-RF/V

- Tofpine with valve
- Unlimited system configurations available to meet your needs
- Reducing plumbing design time and man-hours



Model number selection

Main-Port		Sub-Port		Sub-Port		Main-Port					
Base model	Valve type	Supply / Return	# of port	Connection size	Connecting element	Connection size	Inlet side	Mounting direction	Option	Specialized item(s)	
TPS	<input type="text" value="R"/>	<input type="text" value=""/>	<input type="text" value=""/>	<input type="text" value=""/>	<input type="text" value=""/>	<input type="text" value=""/>	<input type="text" value=""/>	<input type="text" value=""/>	<input type="text" value=""/>	<input type="text" value=""/>	
e.g.: TPS25-RV-S3-03-A05L-D											
										Blank port *4	
										D Bottom side mounting	
										B Back side mounting	
										L Left side when looking at system	
										R Right side when looking at system	
										B Back side	
										D Bottom side	
										LR Left-right side	
										04 Rc3/4	
										05 Rc1	
										06 Rc1 1/4	
										A Threaded fitting	
										L Elbow *3	
										V Valve *3	
										LV Elbow + valve *3	
										01 Rc1/4 *2	
										02 Rc3/8	
										03 Rc1/2	
										04 Rc3/4	
										R3 R1/2 *2	
										R4 R3/4 *2	
										2 2 port	
										3 3 port	
										4 4 port	
										5 5 port	
										6 6 port	
										7 7 port	
										⋮ ⋮	
										S Supply manifold	
										R Return manifold	
										F No valve (Threaded fitting or plug)	
										V Ball valve with flange *1	
										B Ball valve	
										L L-shaped needle valve *1	
										N Straight angle needle valve	
		Main-port ID			Sub-port connection size			Main-port connection size			
25		25A			Rc1/4, Rc3/8, Rc1/2, R1/2			Rc3/4, Rc1			
32		32A			Rc1/2, Rc3/4, R3/4			Rc1, Rc1 1/4			

*1: Available sub-port connection size limited
 *2: Not available for "V" and "L".
 *3: Available on TPS25 Series only.
 *4: Number of blank port(s) or position(s) should be indicated as below.
 "P" stands for blank port. If the second port from left is blank, "P2" needs to be indicated.



Dimensions

	A	B	C	D	E	F	G	H	J
TPS25	20	26.5	47	60	(70)	26.5	56	61	4.8
TPS32	24	36	66	76	(90)	34	66	66	6

Specifications

Pressure limit	1MPa(G)
Fluid temperature limit	100°C
Operating temperatures	0 – 55°C (Non-condensing)

Outline drawing

Example configuration

Materials

No.	Part name	Material
1	Ball valve with flange	SCS13, etc.
2	Main-port fitting	SCS13
3	Main pipe	SCS13
4	Plug for main-port	SCS13
5	Straight angle needle valve	SCS13, etc.
6	Sub-port fitting	SCS13
7	L-shaped needle valve	SCS13, etc.
8	Ball valve	SCS13, etc.

